

# VPN CLIENT INSTALL INSTRUCTIONS WINDOWS

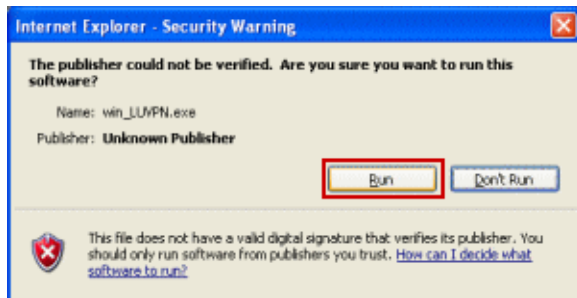
## Requirements

- Windows 9x/2000/XP
- Must be a system administrator to install

Download the LUVPN client from the [VPN Client for Windows](#) link on the website.

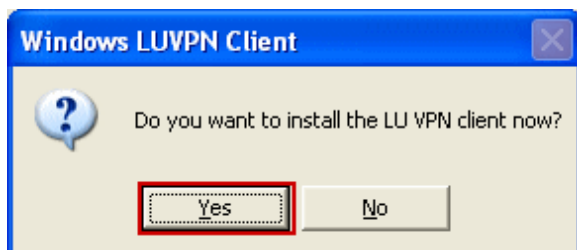
Choose Run if you wish start the install immediately. It will require a restart. Otherwise choose save to install at another time.

\* If you are using Internet Explorer 6.0 and Windows XP SP2 you will receive a security warning. Click Run to continue.

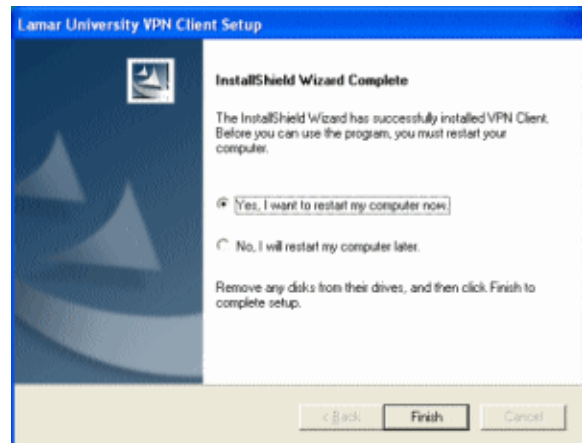


To start the install if you have previously saved the installer to another location simply double click on the file.

You will then be prompted to start the install. Click Yes to continue.



The installer will then proceed to install the VPN client. When it has completely you **MUST** restart the PC before being able to use the client. Choose Yes and click Finish to proceed.



# VPN CLIENT USAGE INSTRUCTIONS WINDOWS

You may use the VPN client for the following purposes.

- Dial in VPN from an existing internet connection to access on campus resources otherwise inaccessible from off campus.
- To access LUNET and the Internet from on campus when connected to a Wireless Access point or to a public wired connection.

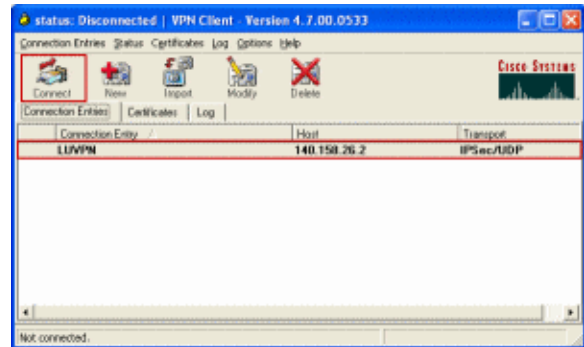
\* (Windows File Sharing is not permitted from VPN connections at this time. Shared Folders, Shared Printers, & Web Folders)

First establish a successful connection to your ISP, LU Wireless access point, or LU Wired public port. On Lamar University's campus your network card will be assigned an address of 10.1.2.0-10.1.254.254 if you are connected to a wireless access point or a wired public access port.

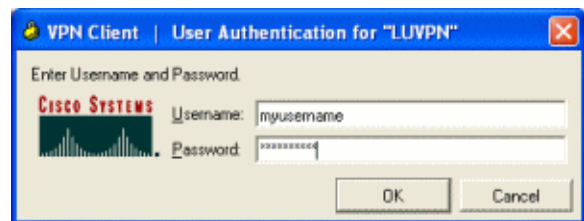
To launch the VPN client, click on Start, All Programs, LUVPN Client, VPN Client.



After launching the client you will be presented with the connections screen. To initiate a connection either double-click the LUVPN connection entry or single-click the connection entry and choose connect from the tool bar at the top.



If you have connectivity to your ISP, LU Wireless or Wired public access points you will then be prompted for your username and password. Enter your username and password and hit [Enter] or click on OK.



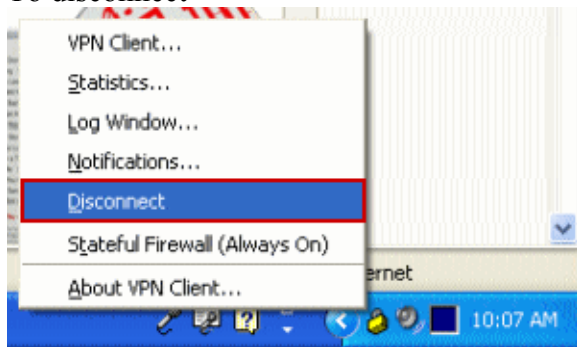
When successfully connected the connections dialog box will disappear and you will see a symbol of a lock in the notification area near the clock.



You have now successfully connected to LUNET with the VPN Client.

To disconnect your session simply click the right mouse button over the lock icon and choose disconnect.

To disconnect



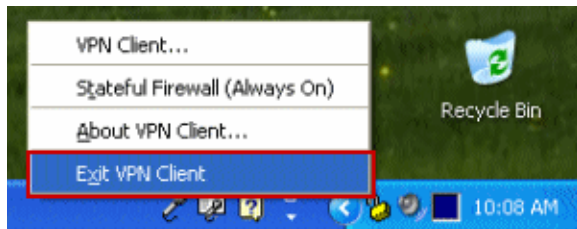
After you choose to disconnect the VPN client will continue to run in the background until you exit the application.

The disconnected state is represented by the unlocked lock icon. This will be displayed in the notification area near the clock.



Disconnected

You can exit the client by clicking the right mouse button over the lock icon and choosing Exit VPN Client.



If you are disconnected and you wish to reconnect you can click the right mouse button on the lock icon and choose VPN Client. You will be presented with the connections box again.

